



**Des Nédhë Group**

An English River First Nation Enterprise

# PATHFINDERS.

---

Charting  
a new  
course for  
Indigenous  
inclusion



**CHANGE MAKERS**

Established in 1991 by English River First Nation (ERFN), the Des Nedhe Development Corporation was designed to grow sustainable employment and business opportunities for ERFN community members.

Now, driven by our purpose, rooted in our character and led by a team of experts, Des Nedhe Group has grown into a national leader in Indigenous entrepreneurship and economic development – a diverse collective of Indigenous-owned businesses dedicated to creating lasting change in Indigenous communities and corporate supply chains across Canada.



**DEEPLY ROOTED**

For generations, the local Dene people have used the word Des Nedhe to describe the "great river" that flows next to them – known today as the Churchill River in northern Saskatchewan. Like that great river, Des Nedhe Group is powerful and relentless – always moving forward.

Rooted in the strength of the people and Elders of English River – and in the spirit of the river itself – we carry ambitions and dreams that will inspire the next generation of Indigenous leaders in the English River community and beyond.



**Des Nedhe Corporate Office**  
301 – 2555 Grasswood Road East  
Saskatoon, SK, Canada S7T 0K1  
P 1 (306) 649-6100  
F 1 (306) 374-9131  
E info@desnedhe.com



**RETAIL**

The Retail division is the backbone of Des Nedhe Group. It includes businesses run by English River Enterprises (ERE). These include full-service gas stations and convenience stores, a general store, gas bar and more recently a liquor store. These retail businesses together employ around 100 full and part-time local workers from English River First Nation.

**GRASSWOOD GAS BAR AND CONVENIENCE STORE**

Our Grasswood Gas Bar & Convenience Store is our flagship retail enterprise and is a familiar landmark, meeting place, and service stop for thousands of travelers using Highway 11 South. The operation is open seven days a week and offers both unleaded and diesel fuel service. The convenience store also features basic groceries, a full line of convenience items as well as a coffee bar.



**PATUANAK GAS BAR AND CONVENIENCE STORE**

Located in the close-knit community of Patuanak in Northern Saskatchewan, is the Patuanak Gas Bar & Convenience Store. Open seven days a week, the service station offers quality fuel and convenience. It provides unleaded fuel service, basic groceries, a full line of convenience items as well as an ATM.



**THE PATCH LIQUOR STORE**

In 2020, DNG proudly opened Saskatchewan's first Indigenous-owned liquor store located on the English River First Nation reserve in the Grasswood Community of Saskatoon.

This one-of-a-kind retail outlet provides convenience for residents of Corman Park and offers a tax savings for Status individuals. Future plans for the liquor store include Indigenous art installations, as well as a section dedicated to curated Indigenous-made beer, wine and spirits from across the country.



**BEAUVAL GENERAL STORE AND GAS BAR**

The Beauval Forks location is an important gathering place and service provider for English River First Nation. Located near Beauval, in Northern Saskatchewan, this retail enterprise opened in 2008 and was the first in the region to provide a restaurant, bakery, butcher, full grocery selection and ATM. Prior to its construction, the nearest location with this range of services was Meadow Lake, nearly two hours from Beauval and three and a half hours from Patuanak.



Today, it continues to provide accessible groceries and supplies for local residents.

This enterprise is one of the largest employers for the communities of Beauval and Patuanak.



The Gas Bar is open seven days a week and offers unleaded and diesel fuel service.





**TRON CONSTRUCTION & MINING**

Tron Construction & Mining has been delivering excellence in infrastructure and construction services to leading Canadian companies for more than 30 years.

Able to handle logistics throughout the construction project life-cycle, Tron Construction & Mining offers engineering, general contracting, construction management and design/build services though both via its own company and its joint venture partners.

**TRON INDUSTRIAL**

Tron's deep industrial experience brings expert service and support to new or existing facilities, including natural gas power plants, oil and gas facilities, co-generation plants, and more.



**INDUSTRY LEADER**

Tron Construction & Mining Limited Partnership (Tron) is an industry leading, 100% First Nations owned, Canadian General Contractor. Over the last 30 years, Tron has grown from a Saskatchewan based general contractor to a national, all-purpose organization that can deliver a wide array of projects across multiple industries and market sectors.

Some of our services include:

- Early contract involvement including engineering
- Construction & general contracting
- Post construction
- Construction management & consulting
- Design build



**SAFETY, QUALITY, SCHEDULE & COST**

Tron's four pillars of execution success are safety, quality, schedule and cost. Our client-centric approach allows us to build true partnerships by focusing on developing strategic long-term relationships with clients, suppliers and contractors. Our First Nations roots provide us with an unparalleled understanding of how to effectively build and sustain Indigenous relationships in impacted areas as well as build capacity.

We offer specialize work in the areas of:

- Mechanical & piping Installation
- Electrical & instrumentation Installation
- Infrastructure & utilities support
- Civil, structural, architectural & building services

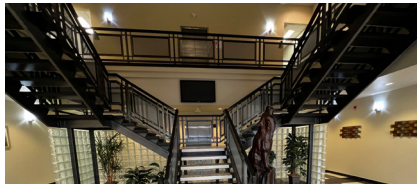


*Tron works in an environment that has safety as a first priority, ensuring safety and quality standards are met and fostering continual improvement throughout the company. Tron has earned industry accepted certifications such as COR, ISO9001:2015, ASME and CWB.*



**ENGLISH RIVER PROPERTY MANAGEMENT**

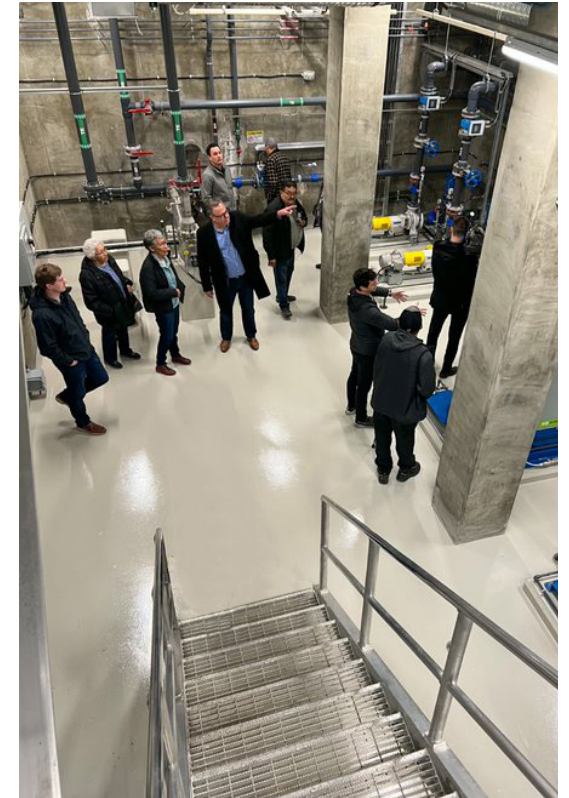
With properties at Grasswood Junction in Saskatoon, Beauval and Patuanak, ERPM hosts a wide ranging group of tenants. Convenience stores, gas bars and a pharmacy service the north while a growing number of Indigenous and non-Indigenous tenants are located at Grasswood Junction in Saskatoon.



**DES NEDHE UTILITY**

As the first membrane bioreactor (MBR) in the Province, the Grasswood Wastewater Treatment facility is the most advanced in Saskatchewan. Designed to treat up to 1000 cubic meters of waste water a day, it will serve commercial and residential customers at Grasswood and in the RM of Corman Park. Supported by loan funding from Canadian Infrastructure Bank and operated by SaskWater, it may be the first 4P project in Canada.

In early 2024 Des Nedhe entered into a partnership with EPCOR to provide long-term water treatment services to the rapidly growing neighbourhood surrounding Grasswood Junction in Saskatoon.





### CEDAR LEAF CAPITAL

Scotiabank has entered into an agreement with two Indigenous development corporations and one First Nation to seek regulatory approval to create and operate a new investment dealer in Canada. The proposed investment dealer, to be named Cedar Leaf Capital Inc. ("Cedar Leaf Capital"), will be majority-owned by three Indigenous shareholders: Nch'kay Development Limited Partnership, Des Nedhe Financial LP and Chippewas of Rama First Nation and controlled initially by Scotiabank.

Subject to regulatory approval, Cedar Leaf Capital will be the first-to-market majority Indigenous-owned investment dealer in Canada. At formation, 70% of the equity of Cedar Leaf Capital will be owned by its three Indigenous shareholders, directly or indirectly, apportioned ~23.3% to each. It is intended that Cedar Leaf Capital will become wholly Indigenous-owned, controlled and operated in the future. Until such time, the firm's operations will leverage Scotiabank's infrastructure and core enterprise frameworks as it develops its self-sustaining operations. Once achieved, and subject to further regulatory approval, Scotiabank intends to facilitate an orderly transition to reduce the Bank's controlling interest in the entity.



With necessary approvals, Cedar Leaf Capital will commence operations as an investment dealer and offer institutional clients in all provinces and territories of Canada financial advisory services with a particular focus on acting as a placement agent or underwriter of Canadian fixed income securities offerings.



Clint Davis will be appointed CEO of Cedar Leaf Capital. Clint is Inuk from Labrador and a Beneficiary (member of the community) under the Labrador Inuit Land Claim Agreement. Clint has more than 20 years of experience with financial institutions and Indigenous organizations in Canada, driving a strategic vision that advances Indigenous development corporations and businesses, and advising Indigenous communities and development corporations on economic development and capacity building opportunities.

As the first Indigenous owned and led investment dealer in Canada, Cedar Leaf Capital's objectives will extend beyond those of a traditional market intermediary. An Indigenous-owned and led investment dealer will foster greater Indigenous participation in the capital markets, create commercial opportunities for Indigenous communities, and partner with established market participants to assist them in meeting their reconciliation commitments.



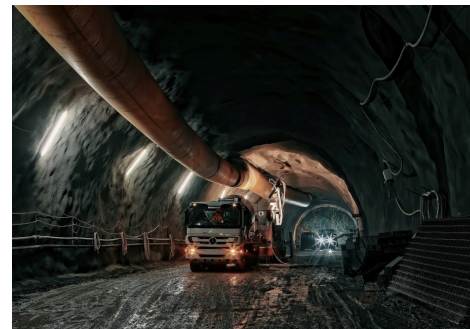
### TAMARACK MINING SERVICES

Tamarack Mining Services Inc., a leading group purchasing organization (GPO) in Canada serving the mining, industrial, and construction sectors, proudly announces the establishment of the nation's inaugural Fully Accredited First Nations Group Purchasing Organization. This historic achievement is the result of a strategic partnership between Tamarack Mining Services Inc. and the Des Nedhe Group.



The formation of this Canadian GPO signifies a groundbreaking shift in procurement practices across Canada's mining, industrial, and construction sectors. By harnessing the specialized knowledge of the Des Nedhe Group, a respected entity within Indigenous communities, and drawing upon Tamarack Mining Services Inc.'s wealth of experience and resources in procurement and technology, this initiative promises to revolutionize the landscape of group purchasing, unlocking value for members and fostering sustainable, cost-effective practices.

Jordan Baptiste, a distinguished leader in Indigenous business development and the mining industry, spearheads the newly formed GPO in Canada as Managing Director with the unwavering support of Tamarack's seasoned professionals. Commenting on the venture, Baptiste emphasized the transformative potential of group purchasing for Canada, stating, "Our aim is to provide our members with access to best-in-class suppliers, ensuring a cost-effective and secure supply chain that contributes to the sustainability of our business operations, a streamlined contracting processes for buyers and sellers, and a simplified supply chain. Our core values include advancing Indigenous partnerships and participation in the mining sector supply chain."





# GRASSWOOD JUNCTION

## Locating At Grasswood Junction:

- Build to suit - no capital costs with a long-term lease
- 50 currently available acres of fully serviced light industrial property
- Lower tax costs than the City using USER Fees (Urban Services Expense Recovery) model
- Current infrastructure phase means opportunity for total customization
- Flexible roadway and footprint options adjacent to two existing CN Rail lines
- New, technology driven, carbon neutral, solar equipped buildings
- Potential for partnerships with other First Nations
- Business park to provide utility services for 20,000 people in the neighbouring municipality
- On reserve development enhances retention of First Nations employees and contributes to reconciliation strategies
- Additional land available for future expansion
- SaskTel GPON internet on site

## GRASSWOOD JUNCTION

Just outside of Saskatoon, Grasswood Junction is a 134.61 acre English River First Nation reserve property located three kilometres south of Circle Drive on the northwest corner of Highway 11 and Grasswood Road, one of Saskatoon's busiest regional crossroads. Situated near a major commercial district and a year-round recreational complex, our 10 building Grasswood Junction property is home to post-secondary, government and community organizations, mining businesses, a coffee roastery, and other service companies including Des Nedhe Utilities' waste water treatment facility. Prime for future development, the site is currently under construction to include other light industrial, retail, office, and hospitality sector businesses.

For more information, contact Kevin Johnson



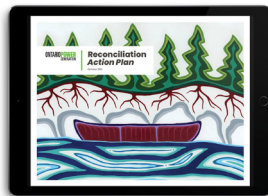


**CREATIVE FIRE**

Wholly-owned by Des Nedhe Group, Creative Fire is the only 100 percent Indigenous-owned communications company in Canada exclusively committed to providing expert strategic communications, research, and creative services, with a specialty in Indigenous engagement and relationship building.



With more than two decades of experience serving many of Canada's most successful resource-sector companies, Creative Fire thought leaders and industry experts help bridge gaps of understanding and build connections between Indigenous and non-Indigenous players in the Canadian business landscape.



**SOLSTICE COFFEE**

We're proud to pioneer a fully Indigenous supply chain in Canada. From farm to cup, we support Indigenous producers and roasters. Solstice Coffee is roasted on-site at Grasswood Junction. When you choose our coffee, you're creating opportunities for Indigenous communities and ensuring fair wages for farmers.







# ELA HULTSI

INTEGRATED FACILITIES MANAGEMENT



## ELA HULTSI

Ela Hultsi is a First Nations owned joint venture between Des Nedhe and BGIS. We offer a complete suite of facilities management products and services to business and institutional clients from coast to coast to coast.

Through strategic alliances with established industry leaders, our First Nations company delivers facility management products and services with a commitment to Indigenous employment and a keen focus on environmental stewardship.



Tamara Goddard  
General Manager, Ela Hultsi

## BGIS

With the proven bench strength of BGIS and Des Nedhe, Ela Hultsi brings over 25 years of providing a full range of innovative consulting, management and delivery services for owners and occupiers of real estate. With a rich engineering and technical background and a commitment to client service, Ela Hultsi protects both the tangible and intangible; not only staff and physical assets, but client reputations, brands and core business.

### Corporate Coffee Program

Distributing Des Nedhe's own Solstice Coffee exclusively, Ela Hultsi provides corporate coffee solutions that employ a fully Indigenous supply chain. From Indigenous growers worldwide to an on-reserve roastery at Grasswood Junction, we're helping to take Solstice from farm to cup.



### Nature's Pond Cleaning Products

Nature's Pond is an all-surface green cleaning technology that contains a blend of billions of specialized CFU bacteria that essentially break dirt down to clean and eliminate odours. Our unique natural solvent is comprised of a blend of surfactants and beneficial bacteria. Natural enzymes are released and keep eliminating odour for 8-10 hours after cleaning. Nature's Pond is fully hypo-allergenic and releases no harmful volatile organic compounds (VOC).

### Cleaning Services

We have over 60 years of experience providing facility cleaning and ancillary services to clients of every size and industry type. From basic janitorial programs to many specialty services, we are an established and trusted source for facility maintenance.

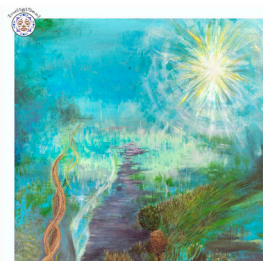
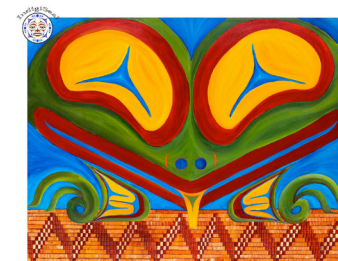


### Facilities Management

Our team of experts is dedicated to maintaining and enhancing the functionality, safety, and efficiency of your physical work-space. From routine maintenance to emergency repairs, energy management, and space optimization, we handle every aspect with precision and care.

### Indigenous Carpeting

A groundbreaking collaboration that epitomizes the spirit of partnership, creativity, and social responsibility. The artistic soul of this initiative lies in the carpet patterns, each meticulously crafted and inspired by original Indigenous artwork, jointly commissioned by Ela Hultsi and BGIS. The intricate stories woven into each piece serve as a profound educational tool to enlighten and sensitize people to Indigenous values and principles. With each carpet purchase, customers receive a reproduction of the inspirational artwork, either digitally or physically, that forms the basis of the carpet pattern.





**NEETAH CONSTRUCTION**

Neetah Construction LP is a multi-service heavy civil and road building construction and maintenance company. Neetah is a 51% Indigenous partnership between the Des Nedhe Group, and the Magnorum Group (Formerly the Morsky Group). Neetah has grown from its inception to servicing multiple heavy civil projects throughout Saskatchewan and a full time complement of over seventy five employees.



**OUR MISSION**

To provide high quality and superior value road and highway infrastructure construction and maintenance services in the province of Saskatchewan. We bring our expertise and local experience to the marketplace and approach every project as collaborators and partners, to achieve the best result possible for all parties. From infrastructures owners to consultants, subcontractors, suppliers and taxpayers, our goal is to provide exceptional service and value to your project.



**OUR SERVICES**

Neetah Construction has the expertise and knowledge to tackle a wide variety of your civil needs. From civil works to road construction and maintenance, as your civil infrastructure partner, Neetah Construction brings professionalism, expertise and a collaborative mindset to every project.

**Some of the typical services and maintenance strategies that we employ:**

- Heavy civil works, earthmoving and site preparation
- Underground infrastructure including culverts and water and sewer installations
- Road and highway construction and maintenance, including chip sealing

**DATSA DYNAMICS**

The Des Nedhe Group and Canadian UAVs are pleased to announce a formal partnership designed to provide industrial scale UAV (drone) services for the energy sector.

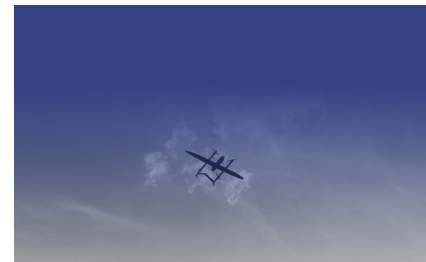
This joint venture is a demonstration of advancing partnerships between communities with long term engagement and world leading technology.



Canadian UAVs is an aviation company, based in Calgary, Alberta, who solely specializes in the integration of unmanned aircraft into both commercial and military missions. This sole focus keeps them uniquely positioned to understand the best of market for technology, operations, airworthiness and delivery.

*"Des Nedhe is extremely excited to partner with Canadian UAVs in applying their cutting edge beyond-line-of-site UAV technology to the Canadian energy, mining, defense, environmental, and public safety sectors."*

**Sean Willy - President & CEO  
Des Nedhe Group**



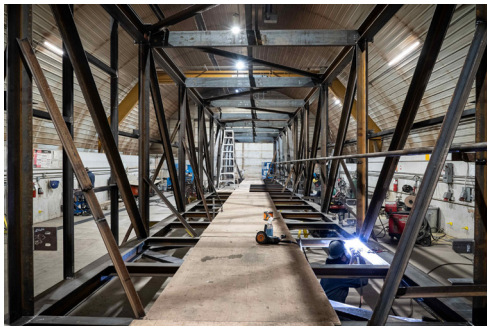
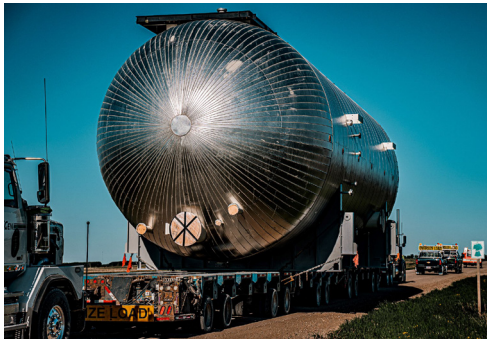
*"Sean Willy and I have been talking about what the future of aerospace, heavy industrial stewardship and defense should look like for the better part of a decade. Canada and our clients are best served when local knowledge and practices are supported by unique business strategies and multi-decade investment in technology."*

**Sean Greenwood - President & CEO  
Canadian UAVs**



### JNE WELDING

Majority owned by Des Nedhe Group and Peter Ballantyne Cree Nation, JNE Welding is one of Western Canada's most diverse custom steel fabricators, with clients in North American industry sectors ranging from mining, environmental and construction to petrochemical and power generation.



### AURORA RENEWABLES

Based in Saskatoon and with service locations in Bonnyville, AB and Kelowna, BC, Aurora Renewables is an Indigenous clean energy turnkey service provider. Aurora Renewables provides solar power solutions to the industrial, commercial, grid scale, farm and residential markets.



#### Asset Management

- Site management
- Warehousing
- Asset management planning assessment
- Condition
- Engineering analysis & optimization
- Predictive maintenance



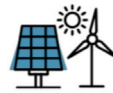
#### Solar Array O&M

- Module cleaning
- Vegetation / pest control
- Drone thermography
- Module replacement
- Inverter replacement



#### Electrical O&M

- Component replacement
- Substation thermography
- Protection relay testing
- Annual inspection & cleaning



#### Renewable Energy

- Solar ground mount
- Solar roof-mount
- Grid scale
- Battery Energy Storage Systems
- EV Charging Infrastructure
- Balance of Plant
- Off-grid & remote
- Mission Critical Environments



#### Engineering & Design

- Roadmaps
- Studies & optimization
- Project Development
- Financial analysis
- Permitting
- Civil/structural
- Electrical
- Solar layout
- Balance of plant
- Interconnections



#### Construction

- Foundations & piling
- Racking
- Module installation
- Electrical
- Balance of plant
- Interconnections



**MORSKY INDUSTRIAL SERVICES LTD.**

Des Nedhe Group owns a 51 percent share of Morsky Industrial Services Ltd., a Saskatchewan-based heavy civil and site services business with extensive experience in the mining and potash sector. The company specializes in excavation, tailings management, construction, septic removal and hauling, snow removal, commercial/industrial duct cleaning and trucking.



**ATHABASCA CATERING**

Athabasca Catering Limited Partnership has provided the majority of remote site food services at northern mining operations since 1994. Supporting a local workforce of more than 500 employees, the company is a major contributor to the local Indigenous economy. Des Nedhe owns a 10 percent share of this company, which is managed by the Kitsaki Management Limited Partnership.



**NORTHERN RESOURCE TRUCKING**

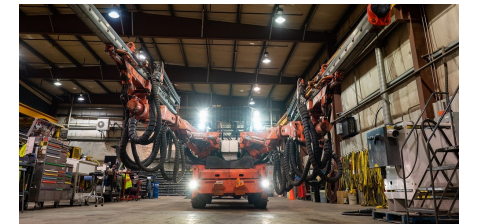
Northern Resource Trucking provides essential transportation services, delivering consumables, general freight, liquid and dry bulk commodities, machinery, and oversized loads between northern mining sites and the rest of Canada. Des Nedhe Group is one of 12 northern Saskatchewan First Nations & Métis owners of the venture, along with Trimac Transportation.



**MUDJATIK THYSSEN MINING**

A joint venture between Mudjatik Enterprises, Thyssen Mining, and Tron Construction – and co-owned by several local First Nations and Métis communities – Mudjatik Thyssen Mining (MTM) was created to undertake mine construction, development, and production contract work in northern Saskatchewan.

Managed by Tron Construction, MTM brings capital and employment to more than 13 communities in the north, providing northern Saskatchewan residents and communities with the opportunity to responsibly participate in and benefit from the Saskatchewan uranium mining industry.



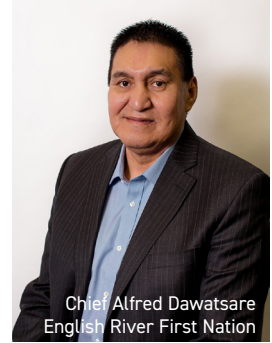


# ENGLISH RIVER FIRST NATION



## ENGLISH RIVER FIRST NATION

English River First Nation is a signatory to Treaty 10 (1906) and is comprised of 19 reserves located in Northern Saskatchewan. ERFN has a population of approximately 1,800 people. The on-reserve members of the First Nation reside at two small remote Northern Saskatchewan reserves called Wapatuanak and La Plonge. These reserves are located approximately 600 km north of Saskatoon.



Chief Alfred Dawatsare  
English River First Nation



ERFN is a Dene and Cree First Nation with Ancestral Lands encompassing a large section of the boreal forest

in central-northern Saskatchewan, stretching from the Churchill River in the south to Wapata Lake in the north. ERFN has seven historical

settlements located at Porter Island, Cree Lake, Elak Dase, Knee Lake, Dipper Rapids, Wapachewunak and La Plonge. Since 1992, an additional twelve reserve parcels have been added to their land base through the Treaty Land Entitlement process, which aims to resolve outstanding Treaty land obligations.

The community is shaped by its respected Elders who are widely consulted for decisions, wisdom and strength. ERFN is dedicated to stewardship of the land and the education of future generations through land based learning youth camps and other opportunities to share knowledge on the land. While remaining true to traditional values as "keepers of the land," members also pursue opportunities to participate in the development of ERFN's forestry, industry and workforce resources.



Elder Isidore Campbell  
English River First Nation

