



Des Nēdhé Group

An English River First Nation Enterprise

PATHFINDERS.

Charting
a new
course for
Indigenous
inclusion



CHANGE MAKERS

Established in 1991 by English River First Nation (ERFN), the Des Nedhe Development Corporation was designed to grow sustainable employment and business opportunities for ERFN Community members.

Now, driven by our purpose, rooted in our character, and led by a team of experts, Des Nedhe Group has grown into a national leader in Indigenous entrepreneurship and economic development—a diverse collective of Indigenous-owned businesses dedicated to creating lasting change in Indigenous Communities and corporate supply chains across Canada. Today, 63% of the employees in our managed entities are Indigenous, reflecting our deep commitment to fostering economic opportunities for Indigenous Canadians.

PROPERTY & FACILITIES MANAGEMENT	
 GRASSWOOD JUNCTION	 ELA HULTSI INTEGRATED FACILITIES MANAGEMENT
 Athabasca Catering	
 English River PROPERTY MANAGEMENT	 SOLSTICE COFFEE
RETAIL	
 English River ENTERPRISES	 The PATCH WINES & SPIRITS
INDUSTRIAL	
 TRON	 DATSA DYNAMICS
 JNE WELDING	
 AURORA RENEWABLES BY THE GREAT CANADIAN ENERGY COMPANY	 NEETAH CONSTRUCTION
 Morasky INDUSTRIAL	
 TAMARACK MINING SERVICES	 NRT Northern Resource Trucking
PROFESSIONAL SERVICES	
 CREATIVE FIRE	 Cedar Leaf CAPITAL
PUBLIC UTILITY	RESOURCES
 Des Nédhé UTILITY	 Des Nédhé RESOURCES



DEEPLY ROOTED

For generations, the local Dene people have used the words Des Nedhe to describe the “great river” that flows next to them – known today as the Churchill River in northern Saskatchewan. Like that great river, Des Nedhe Group is powerful and relentless – always moving forward.

Rooted in the strength of the people and Elders of English River First Nation – and in the spirit of the river itself – we carry ambitions and dreams that will inspire the next generation of Indigenous leaders in the English River Communities and beyond.



Des Nedhe Corporate Office
301 – 2555 Grasswood Road East
Saskatoon, SK, Canada S7T 0K1
P 1 (306) 649-6100
F 1 (306) 374-9131
E info@desnedhe.com



English River ENTERPRISES

RETAIL

The Retail division is the backbone of Des Nédhe Group. Businesses operated by English River Enterprises (ERE) include full-service gas stations and convenience stores, a northern grocery store, and most recently a liquor store on our Grasswood property. These retail businesses together employ over 180 full and part-time local workers with over 85% of them being Indigenous.



Kristopher Perrier
Director, Retail

GRASSWOOD GAS BAR AND CONVENIENCE STORE

Our Grasswood Gas Bar & Convenience Store is our flagship retail enterprise and is a familiar landmark, meeting place, and service stop for thousands of travelers using Highway 11 South. The operation is open seven days a week and offers both unleaded and diesel fuel service. The retail store also features basic groceries, a full line of convenience items, a coffee bar and an independently operated Subway franchise.



PATUANAK GAS BAR AND CONVENIENCE STORE

Located 500km north of Saskatoon in the close-knit Community of Patuanak, is the Patuanak Gas Bar And Convenience Store. Open seven days a week, the service station provides unleaded fuel service, basic groceries, a full line of convenience items as well as an ATM.



THE PATCH LIQUOR STORE

In 2020, DNG proudly opened Saskatchewan's first Indigenous-owned liquor store located on the English River First Nation reserve in the Grasswood Community of Saskatoon. This one-of-a-kind retail outlet provides convenience for residents of Corman Park and offers a tax savings for Status individuals. Future plans for the liquor store include Indigenous art installations, as well as a section dedicated to curated Indigenous-made beer, wine and spirits from across the country.



BEAUVAL GENERAL STORE AND GAS BAR

This Beauval Forks location is an important gathering place and service provider for English River First Nation. Located near Beauval, about 400km north of Saskatoon, this retail enterprise opened in 2008 and was the first in the region to provide a restaurant, bakery, butcher shop, full grocery selection and an ATM. Prior to its construction, the nearest location with this range of services was Meadow Lake, nearly two hours from Beauval and over three hours from Patuanak.



For the last 17 years, the General Store has provided accessible groceries and supplies for local residents. This enterprise is one of the largest employers for the Communities of Beauval and Patuanak.





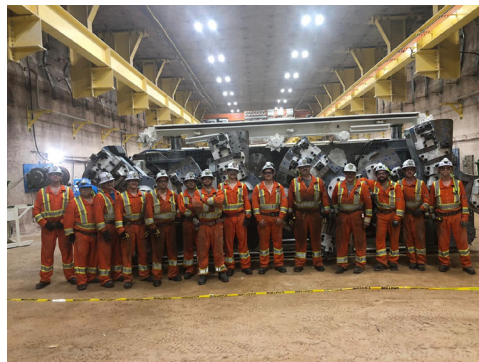
TRON CONSTRUCTION & MINING

Tron Construction & Mining has been delivering excellence in infrastructure and construction services to leading Canadian companies for more than 30 years.

Able to handle logistics throughout the construction project life-cycle, Tron Construction & Mining offers engineering, general contracting, construction management and design/build services though both via its own company and its joint venture partners.

Tron's deep industrial experience brings expert service and support to new or existing facilities, including natural gas power plants, oil and gas facilities, co-generation plants, and more.

Tron can plan and execute projects of any scope, scale, or level of complexity, with proven methodologies designed to deliver projects safely – on time and on budget.



INDUSTRY LEADER

Tron Construction & Mining Limited Partnership (Tron) is an industry leading, 100% First Nations owned, Canadian General Contractor. Over the last 30 years, Tron has grown from a Saskatchewan based general contractor to a national, all-purpose organization that can deliver a wide array of projects across multiple industries and market sectors.

Services include:

- Early contract involvement including engineering
- Construction & general contracting
- Post construction
- Construction management & consulting
- Design build



SAFETY, QUALITY, SCHEDULE & COST

Tron's four pillars of execution success are Safety, Quality, Schedule and Cost. Our client-centric approach allows us to build true partnerships by focusing on developing strategic long-term relationships with clients, suppliers and contractors. Our First Nations roots provide us with an unparalleled understanding of how to effectively build and sustain Indigenous relationships in impacted areas as well as build capacity.

We offer specialized work in the areas of:

- Mechanical & piping installation
- Electrical & instrumentation installation
- Infrastructure & utilities support
- Civil, structural, architectural & construction
- Vessel fabrication



The Conference Board of Canada

Technical Safety Authority of Saskatchewan

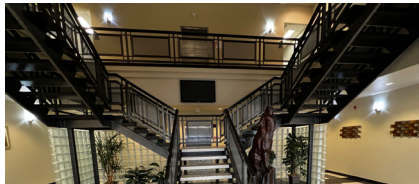


Tron works in an environment that has safety as a first priority, ensuring safety and quality standards are met and fostering continual improvement throughout the company. Tron has earned industry accepted certifications such as COR, ISO9001:2015, ASME and CWB.



ENGLISH RIVER PROPERTY MANAGEMENT

With properties at Grasswood Junction in Saskatoon, Beauval and Patuanak, English River Property Management hosts a wide ranging group of tenants. Convenience stores, gas bars, a pharmacy service in the north and a growing number of Indigenous and non-Indigenous tenants at Grasswood Junction.



DES NEDHE UTILITY

As the first membrane bioreactor (MBR) in the province, the Grasswood Wastewater Treatment facility is the most advanced in Saskatchewan. Designed to treat up to 1000 cubic meters of waste water a day, it will serve commercial and residential customers at Grasswood and in the RM of Corman Park. Supported by loan funding from Canadian Infrastructure Bank and operated by SaskWater, it may be the first 4P project in Canada.

In early 2024 Des Nedhe entered into a partnership with EPCOR to provide long-term water treatment services to the rapidly growing neighbourhood surrounding Grasswood Junction in Saskatoon.





Cedar Leaf Capital: Shaping the Future of Indigenous-Led Finance

Cedar Leaf Capital is Canada's first majority Indigenous-owned investment dealer, created to foster meaningful Indigenous participation in capital markets. This innovative venture is the result of a collaboration between Scotiabank, Des Nèdhe Financial LP, Nch'kay' Development Limited Partnership and the Chippewas of Rama First Nation. Cedar Leaf Capital is poised to serve as a unique bridge, helping corporate Canada engage with Indigenous-led financial solutions while advancing economic reconciliation in tangible ways.

A Strategic Partnership with Indigenous Ownership

Cedar Leaf Capital was established under a groundbreaking agreement, with 70% of the firm's equity held by its three Indigenous shareholders, each holding approximately 23.3%. Initially, Scotiabank retains a controlling interest and provides infrastructure support to ensure a strong operational foundation. Over time, as Cedar Leaf Capital reaches its full potential, Scotiabank will reduce its ownership stake, transferring complete ownership and control to its Indigenous partners, subject to regulatory approvals.



This model not only guarantees Indigenous ownership but also opens doors for corporations looking to form strong partnerships with Indigenous-led organizations.

Financial Services with a Focus on Partnership

Cedar Leaf Capital's mission goes beyond providing financial services. As Canada's first Indigenous-owned investment dealer, it will specialize in acting as an underwriter and placement agent for Canadian fixed-income securities offerings. In doing so, it offers a unique value proposition to corporate clients: the ability to engage with an Indigenous-led financial institution that brings deep cultural knowledge and market expertise.

By offering tailored financial advice and expert services, Cedar Leaf Capital provides clients with opportunities that align with a growing focus on economic, social, and governance (ESG) criteria. Through its services, the firm enables corporate clients to meet their ESG commitments, while also supporting broader reconciliation efforts.



Leadership with a Vision for the Future

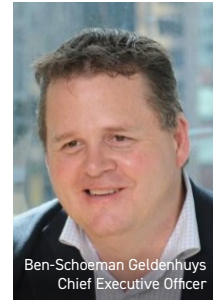
At the forefront of Cedar Leaf Capital is Clint Davis, a seasoned financial leader and Inuk from Labrador with over 20 years of experience. As CEO, Clint guides the firm with his deep understanding of both the financial sector and the unique needs of Indigenous Communities. His leadership is central to Cedar Leaf Capital's vision of fostering relationships built on trust, respect, and mutual success.

TAMARACK MINING SERVICES

Tamarack Mining Services Inc., a leading group purchasing organization (GPO) in Canada serving the mining, industrial, and construction sectors, proudly announces the establishment of the nation's inaugural Fully Accredited First Nations Group Purchasing Organization. This historic achievement is the result of a strategic partnership between Tamarack Mining Services Inc. and the Des Nèdhe Group.

The formation of this Canadian GPO signifies a groundbreaking shift in procurement practices across Canada's mining, industrial, and construction sectors. By harnessing the specialized knowledge of the Des Nèdhe Group, a respected entity within Indigenous Communities, and drawing upon Tamarack Mining Services Inc.'s wealth of experience and resources in procurement and technology, this initiative promises to revolutionize the landscape of group purchasing, unlocking value for members and fostering sustainable, cost-effective practices.

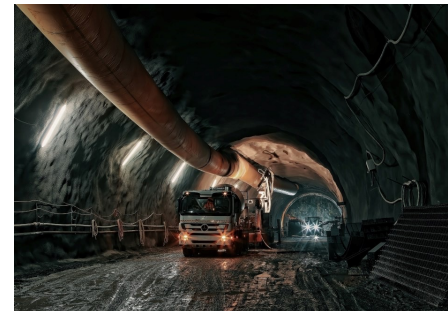
We use the word Members to describe the mining companies that participate in our group procurement. Our procurement method makes buying easier and faster and delivers significant savings. Through the use of our contract library or by participating in group negotiations, our Members are innovating their procurement practices and improving their bottom lines. Members form the bedrock of our procurement model, and together we shape markets.



Ben-Schoeman Geldenhuys
Chief Executive Officer



Jacques Erasmus
Chief Financial Officer





GRASSWOOD JUNCTION

Locating At Grasswood Junction:

- Build to suit - no capital costs with a long-term lease
- 50 currently available acres of fully serviced light industrial property
- Lower tax costs than the City using USER Fees (Urban Services Expense Recovery) model
- Current infrastructure phase means opportunity for total customization
- Flexible roadway and footprint options adjacent to two existing CN Rail lines
- New, technology driven, carbon neutral, solar equipped buildings
- Potential for partnerships with other First Nations
- Business park to provide utility services for 20,000 people in the neighbouring municipality
- On reserve development enhances retention of First Nations employees and contributes to reconciliation strategies
- Additional land available for future expansion
- SaskTel GPON internet on site

GRASSWOOD JUNCTION

Just outside of Saskatoon, Grasswood Junction is a 134.61-acre English River First Nation reserve property located three kilometres south of Circle Drive on the northwest corner of Highway 11 and Grasswood Road, one of Saskatoon's busiest regional crossroads.

Situated near a major commercial district and a year-round recreational complex, our 10-building Grasswood Junction property is home to post-secondary institutions, government and Community organizations, mining, construction and civil works operations, a coffee roastery, and other service companies—including Des Nedhe Utilities' wastewater treatment facility. The site also features the province's busiest Petro-Can gas station along with retail shops, and food services, making it a key commercial hub.

Prime for future development, the site is currently under construction to include additional light industrial, retail, office, and hospitality sector businesses.



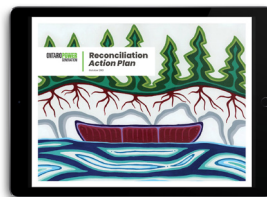
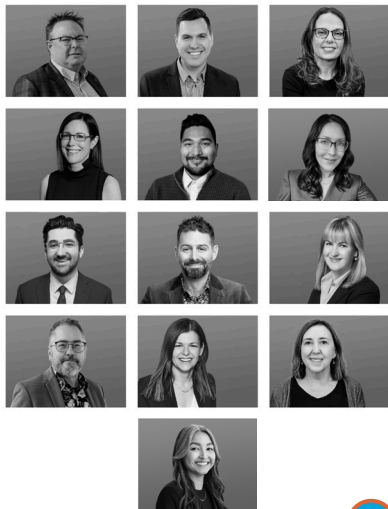


CREATIVE FIRE

Wholly-owned by Des Nedhe Group, Creative Fire is the only 100 percent Indigenous-owned communications firm in Canada exclusively committed to providing expert strategic communications, research, and creative services, with a speciality in Indigenous engagement and relationship building.

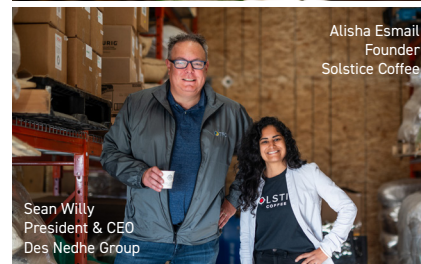


With more than two decades of experience serving many of Canada's most successful resource-sector companies, Creative Fire thought leaders and industry experts help bridge gaps of understanding and build connections between Indigenous and non-Indigenous players in the Canadian business landscape.



SOLSTICE COFFEE

Solstice Coffee is Canada's first coffee company to establish a fully Indigenous supply chain, connecting Indigenous growers worldwide to an Indigenous roastery in Saskatchewan. A collaboration between the Des Nedhe Group and Road Coffee, Solstice Coffee is committed to sustainability and Community empowerment. Our beans are sourced directly from Indigenous farmers and roasted on English River First Nation land, ensuring exceptional quality while preserving the land and uplifting the hardworking hands that produce it.





ELA HULTSI

Ela Hultsi is a First Nations owned joint venture between Des Nedhe and BGIS. We offer a complete suite of facilities management products and services to business and institutional clients from coast to coast to coast.



Tamara Goddard
General Manager

Through strategic alliances with established industry leaders, our First Nations company delivers facility management products and services with a commitment to Indigenous employment and a keen focus on environmental stewardship.



With the proven bench strength of BGIS and Des Nedhe, Ela Hultsi brings over 25 years of providing a full range of innovative consulting, management and delivery services for owners and occupiers of real estate. With a rich engineering and technical background and a commitment to client service, Ela Hultsi protects both the tangible and intangible; not only staff and physical assets, but client reputations, brands and core business.

Corporate Coffee Program

Distributing Des Nedhe's own Solstice Coffee exclusively, Ela Hultsi provides corporate coffee solutions that employ a fully Indigenous supply chain. From Indigenous growers worldwide to an on-reserve roastery at Grasswood Junction, we're helping to take Solstice from farm to cup.



Nature's Pond Cleaning Products

Nature's Pond is an all-surface green cleaning technology that contains a blend of billions of specialized CFU bacteria that essentially break dirt down to clean and eliminate odours. Our unique natural solvent is comprised of a blend of surfactants and beneficial bacteria. Natural enzymes are released and keep eliminating odour for 8-10 hours after cleaning. Nature's Pond is fully hypo-allergenic and releases no harmful volatile organic compounds (VOC).



Facilities Management
Our team of experts is dedicated to maintaining and enhancing the functionality, safety, and efficiency of your physical workspace. From routine maintenance to emergency repairs, energy management, and space optimization, we handle every aspect with precision and care.

Cleaning Services

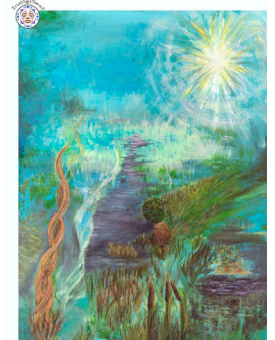
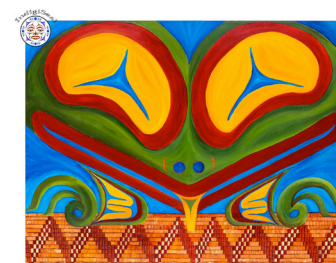
We have over 60 years of experience providing facility cleaning and ancillary services to clients of every size and industry type. From basic janitorial programs to many specialty services, we are an established and trusted source for facility maintenance.



Emmy Award ceremony, 2024

Indigenous Carpeting

A groundbreaking collaboration that epitomizes the spirit of partnership, creativity, and social responsibility. The artistic soul of this initiative lies in the carpet patterns, each meticulously crafted and inspired by original Indigenous artwork, jointly commissioned by Ela Hultsi and BGIS. The intricate stories woven into each piece serve as a profound educational tool to enlighten and sensitize people to Indigenous values and principles. With each carpet purchase, customers receive a reproduction of the inspirational artwork, either digitally or physically, that forms the basis of the carpet pattern.





NEETAH CONSTRUCTION

Neetah Construction LP is a multi-service heavy civil and road building construction and maintenance company. Neetah is a 51% Indigenous partnership between the Des Nedhe Group, and the Magorum Group (Formerly the Morsky Group). Neetah has grown from its inception to servicing multiple heavy civil projects throughout Saskatchewan and a full time complement of over seventy five employees.



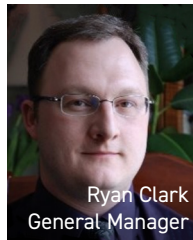
OUR MISSION

To provide high quality and superior value road and highway infrastructure construction and maintenance services in the province of Saskatchewan. We bring our expertise and local experience to the marketplace and approach every project as collaborators and partners, to achieve the best result possible for all parties. From infrastructures owners to consultants, subcontractors, suppliers and taxpayers, our goal is to provide exceptional service and value to your project.



OUR SERVICES

Neetah Construction has the expertise and knowledge to tackle a wide variety of your civil needs. From civil works to road construction and maintenance, as your civil infrastructure partner, Neetah Construction brings professionalism, expertise and a collaborative mindset to every project.



Ryan Clark
General Manager

We specialize in heavy civil works, earthmoving, and site preparation, delivering reliable infrastructure solutions across a range of industries. Our team is experienced in underground infrastructure, including culvert installations and water and sewer systems, ensuring long-term functionality for every project. We also provide road and highway construction and maintenance services, including chip sealing, helping to build and maintain essential transportation networks.



DATSA DYNAMICS

Datsa Dynamics is an aerospace company specializing in data analytics derived from large-scale unmanned aerial vehicle (UAV or drone) datasets. Our mission is to empower Community members, the natural resource industry, and Canadian National Defence stakeholders with actionable insights for informed decision-making.



Utilizing next-generation, long-range UAVs, we offer geospatial data services across the civil, commercial, and military sectors. Our proprietary Sparrowhawk Radar technology ensures safe and efficient operations, even Beyond Visual Line of Sight (BVLOS). Datsa Dynamics is approved by Transport Canada and the Department of National Defence, reflecting our commitment to excellence and safety.

"Des Nedhe is extremely excited to partner with Canadian UAVs in applying their cutting edge beyond-line-of-site UAV technology to the Canadian energy, mining, defense, environmental, and public safety sectors."

**Sean Willy - President & CEO
Des Nedhe Group**



Sean Greenwood & Sean Willy



"Sean Willy and I have been talking about what the future of aerospace, heavy industrial stewardship and defense should look like for the better part of a decade. Canada and our clients are best served when local knowledge and practices are supported by unique business strategies and multi-decade investments in technology."

**Sean Greenwood - President & CEO
Canadian UAVs**





AURORA RENEWABLES

Based in Saskatoon and with service locations in Bonnyville, AB and Kelowna, BC, Aurora Renewables is an Indigenous clean energy turnkey service provider. Aurora Renewables provides solar power solutions to the industrial, commercial, grid scale, farm and residential markets.



Jonathan Palmer
Vice President

Des Nedhe Resources

Des Nedhe Resources is an Indigenous-owned company focused on responsibly managing natural resource opportunities. Through the ownership and leasing of mineral rights to ethical operators, we generate ongoing revenue for English River First Nation while ensuring our environmental and social standards are maintained.



Steve Thompson
Vice President



Asset Management

- Site management
- Warehousing
- Asset management planning assessment
- Condition assessment
- Engineering analysis & optimization
- Predictive maintenance

Solar Array O&M

- Module cleaning
- Vegetation and pest control
- Drone thermography
- Module replacement
- Inverter replacement

Electrical O&M

- Component replacement
- Substation thermography
- Protection relay testing
- Annual inspection & cleaning



Renewable Energy

- Solar ground mount
- Solar roof-mount
- Grid scale
- Battery Energy Storage Systems
- EV Charging Infrastructure
- Balance of Plant
- Off-grid & remote
- Small-scale wind
- Mission Critical Environments

Engineering & Design

- Roadmaps
- Studies & optimization
- Project Development
- Financial analysis
- Permitting
- Civil/structural
- Electrical
- Solar layout
- Balance of plant
- Interconnections

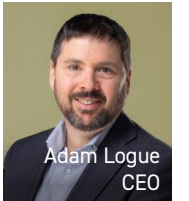
Construction

- Foundations & piling
- Racking
- Module installation
- Electrical
- Balance of plant
- Interconnections

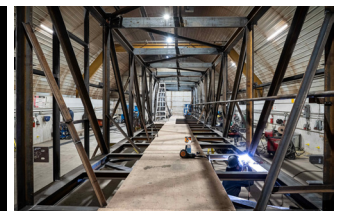


JNE WELDING

Majority owned by Des Nedhe Group and Peter Ballantyne Cree Nation, JNE Welding is one of Western Canada's most diverse custom steel fabricators, with clients in North American industry sectors ranging from mining, environmental and construction to petrochemical and power generation.



Adam Logue
CEO





MORSKY INDUSTRIAL SERVICES LTD.

Des Nedhe Group owns a 51 percent share of Morsky Industrial Services Ltd., a Saskatchewan-based heavy civil and site services business with extensive experience in the mining and potash sector. The company specializes in excavation, tailings management, construction, septic removal and hauling, snow removal, commercial/industrial duct cleaning and trucking.



ATHABASCA CATERING

Athabasca Catering Limited Partnership has provided the majority of remote site food services at northern mining operations since 1994. Supporting a local workforce of more than 500 employees, the company is a major contributor to the local Indigenous economy. Des Nedhe owns a 10 percent share of this company, which is managed by the Kitsaki Management Limited Partnership.



NORTHERN RESOURCE TRUCKING

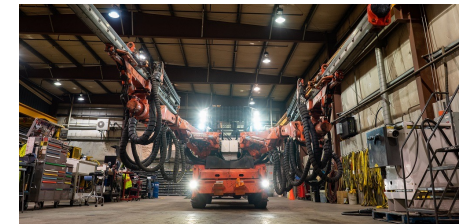
Northern Resource Trucking provides essential transportation services, delivering consumables, general freight, liquid and dry bulk commodities, machinery, and oversized loads between northern mining sites and the rest of Canada. Des Nedhe Group is one of 12 northern Saskatchewan First Nations & Métis owners of the venture, along with Trimac Transportation.



MUDJATIK THYSSEN MINING

A joint venture between Mudjatik Enterprises, Thyssen Mining, and Tron Construction – and co-owned by several local First Nations and Métis communities – Mudjatik Thyssen Mining (MTM) was created to undertake mine construction, development, and production contract work in northern Saskatchewan.

Managed by Tron Construction, MTM brings capital and employment to more than 13 communities in the north, providing northern Saskatchewan residents and communities with the opportunity to responsibly participate in and benefit from the Saskatchewan uranium mining industry.





ENGLISH RIVER FIRST NATION

English River First Nation is a signatory to Treaty 10 (1906) and is comprised of 19 reserves located in Northern Saskatchewan. ERFN has a population of approximately 1,800 people. The on-reserve members of the First Nation reside at two small remote Northern Saskatchewan reserves called Wapatuanak and La Plonge. These reserves are located approximately 600 km north of Saskatoon.



Chief Alfred Dawatzare
English River First Nation



ERFN is a Dene and Cree First Nation with Ancestral Lands encompassing a large section of the boreal forest

in central-northern Saskatchewan, stretching from the Churchill River in the south to Wapata Lake in the north. ERFN has seven historical

settlements located at Porter Island, Cree Lake, Elak Dase, Knee Lake, Dipper Rapids, Wapachewunak and La Plonge. Since 1992, an additional twelve reserve parcels have been added to their land base through the Treaty Land Entitlement process, which aims to resolve outstanding Treaty land obligations.

The Community is shaped by its respected Elders who are widely consulted for decisions, wisdom and strength. ERFN is dedicated to stewardship of the land and the education of future generations through land based learning youth camps and other opportunities to share knowledge on the land. While remaining true to traditional values as "keepers of the land," members also pursue opportunities to participate in the development of ERFN's forestry, industry and workforce resources.



Elder Isidore Campbell
English River First Nation

